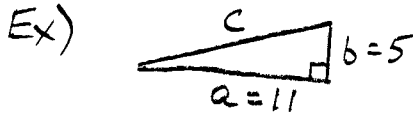
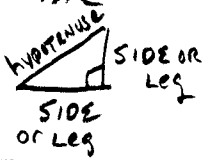


PRE-ALGEBRA "Pythagorean Theorem" Per. :
 Worksheet * CALCULATORS OK * NAME: _____

Pythagorean Theorem
 "P.T."

"THE SQUARE OF THE HYPOTENUSE EQUALS
 THE SUM OF THE SQUARES OF THE
 OTHER TWO SIDES"

$$a^2 + b^2 = c^2$$



$$c^2 = a^2 + b^2 \text{ P.T.}$$

NOTE: $11^2 = 11 \cdot 11 = 121$

$$c^2 = 11^2 + 5^2$$

$$5^2 = 5 \cdot 5 = 25$$

$$c^2 = 121 + 25$$

$$c^2 = 146$$

$$\therefore c = \sqrt{146} = \boxed{12.1} \leftarrow \text{SQUARE ROOT USING CALCULATOR}$$

ANSWER

FIND c^2 THEN c FOR EACH RIGHT TRIANGLE

