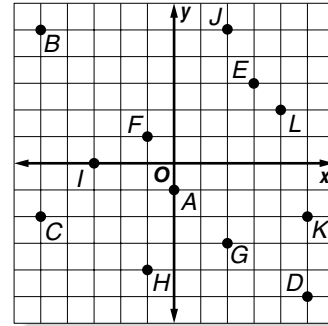


4-1 Practice

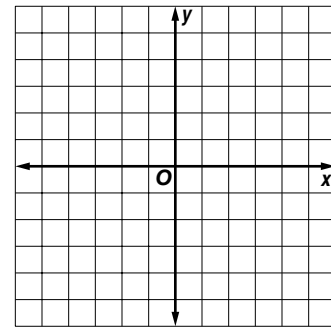
The Coordinate Plane

Write the ordered pair for each point shown at the right. Name the quadrant in which the point is located.



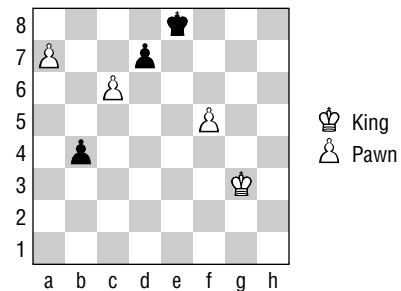
- | | |
|--------------|--------------|
| 1. <i>A</i> | 2. <i>B</i> |
| 3. <i>C</i> | 4. <i>D</i> |
| 5. <i>E</i> | 6. <i>F</i> |
| 7. <i>G</i> | 8. <i>H</i> |
| 9. <i>I</i> | 10. <i>J</i> |
| 11. <i>K</i> | 12. <i>L</i> |

Plot each point on the coordinate plane at the right.

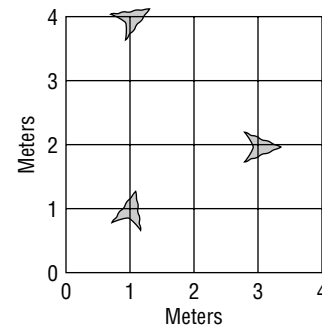


- | | | |
|-----------------|----------------|-----------------|
| 13. $M(-3, 3)$ | 14. $N(3, -2)$ | 15. $P(5, 1)$ |
| 16. $Q(-4, -3)$ | 17. $R(0, 5)$ | 18. $S(-1, -2)$ |
| 19. $T(-5, 1)$ | 20. $V(1, -5)$ | 21. $W(2, 0)$ |
| 22. $X(-2, -4)$ | 23. $Y(4, 4)$ | 24. $Z(-1, 2)$ |

25. CHESS Letters and numbers are used to show the positions of chess pieces and to describe their moves. For example, in the diagram at the right, a white pawn is located at f5. Name the positions of each of the remaining chess pieces.



ARCHAEOLOGY For Exercises 26 and 27, use the grid at the right that shows the location of arrowheads excavated at a *midden*—a place where people in the past dumped trash, food remains, and other discarded items.



26. Write the coordinates of each arrowhead.
27. Suppose an archaeologist discovers two other arrowheads located at (1, 2) and (3, 3). Draw an arrowhead at each of these locations on the grid.