

# Q1HW6 - Graph paper is recommended. Use the grids!

Date \_\_\_\_\_ Period \_\_\_\_\_

© 2010 Kuta Software LLC. All rights reserved.

**Write the slope-intercept form of the equation of the line through the given points.**

1) through: (4, 2) and (0, 5)

2) through: (1, -2) and (0, -5)

3) through: (4, 1) and (0, -5)

4) through: (3, -3) and (0, -2)

**Write the slope-intercept form of the equation of the line described.**

5) through: (-1, 4), parallel to  $y = -6x + 2$

6) through: (-4, 0), parallel to  $y = -\frac{1}{4}x + 1$

7) through: (4, -4), perp. to  $y = x + 1$

8) through: (1, 3), perp. to  $y = -\frac{1}{2}x + 1$

**Sketch the graph of each line.**

9)  $y = -3x - 1$

10)  $y = -\frac{2}{5}x$

11)  $x - 5y = -25$

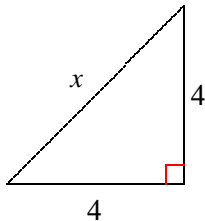
12)  $9x - y = 4$

13)  $5x + 4y = 0$

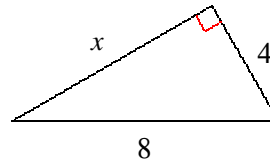
14)  $x - y = 2$

**Find the missing side of each triangle. Leave your answers in simplest radical form.**

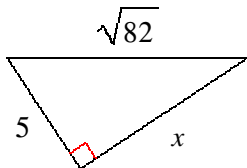
15)



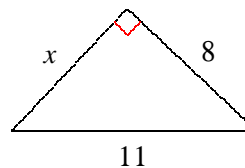
16)



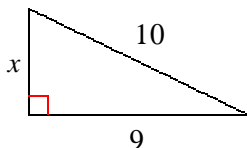
17)



18)



19)



20)

