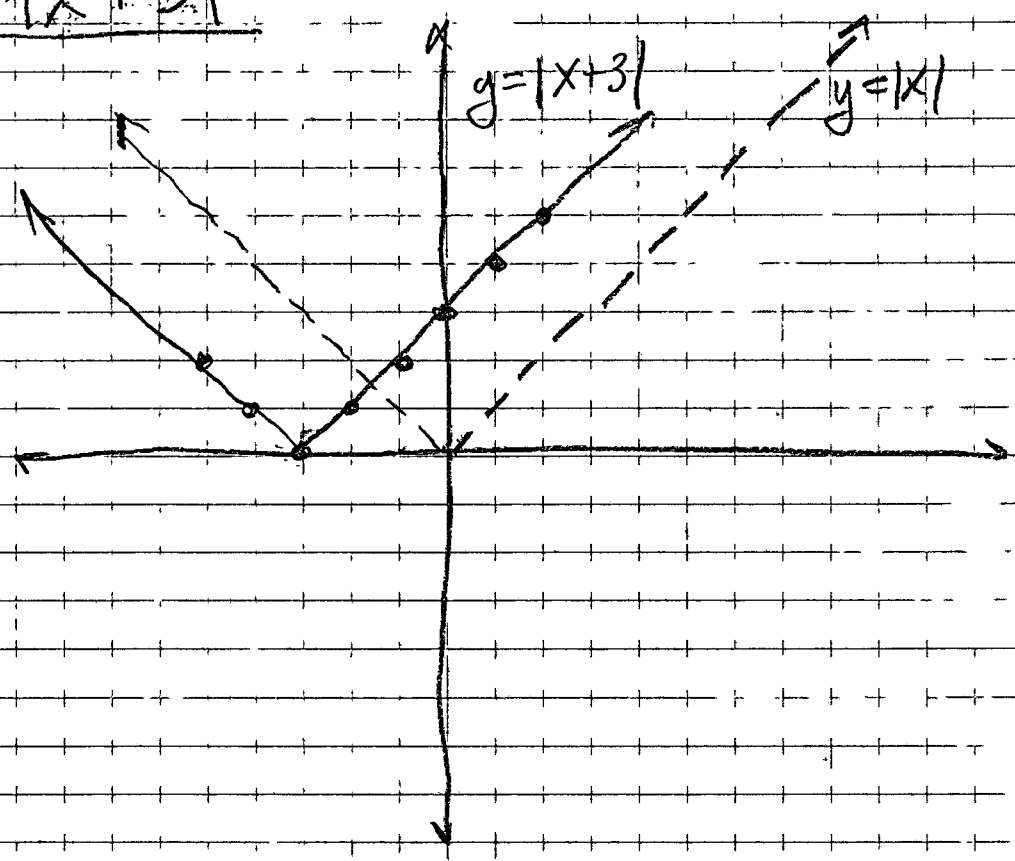


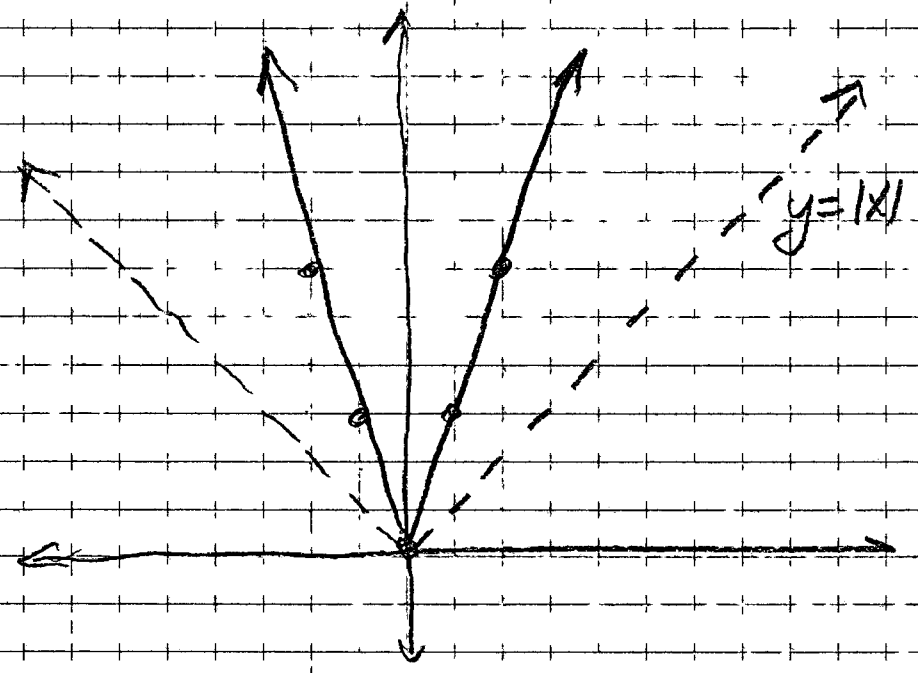
VERTICAL SHIFTS

x	y = x+3
-2	1
-1	2
0	3
1	4
2	5
-3	0
-4	1
-5	2



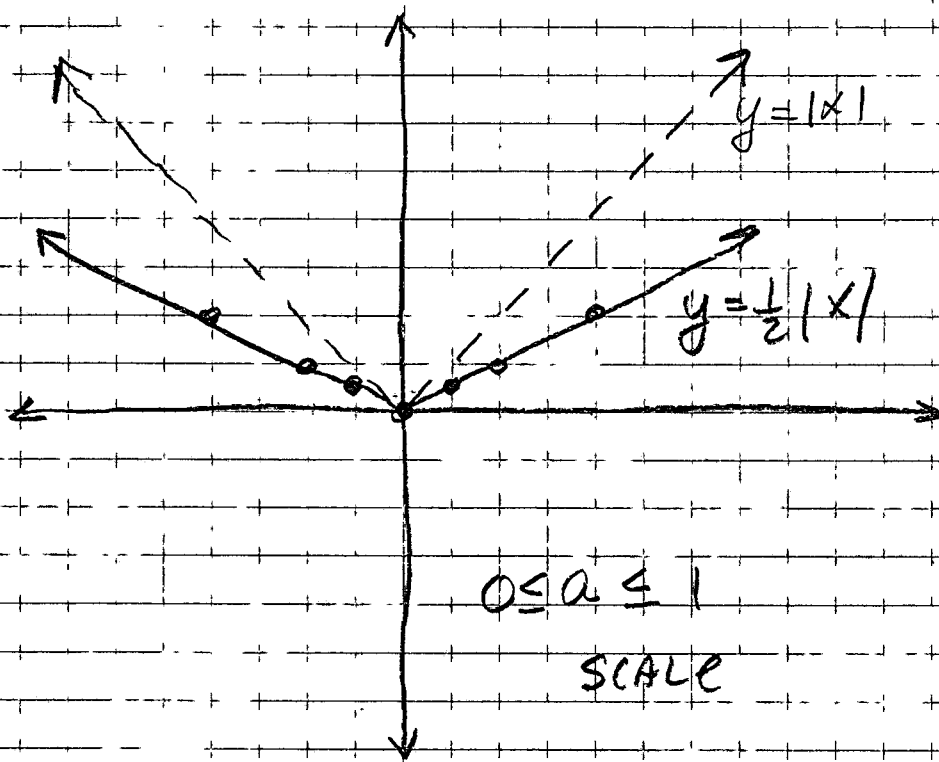
HORIZONTAL SHIFT

x	y = 3 x
-2	6
-1	3
0	0
1	3
2	6

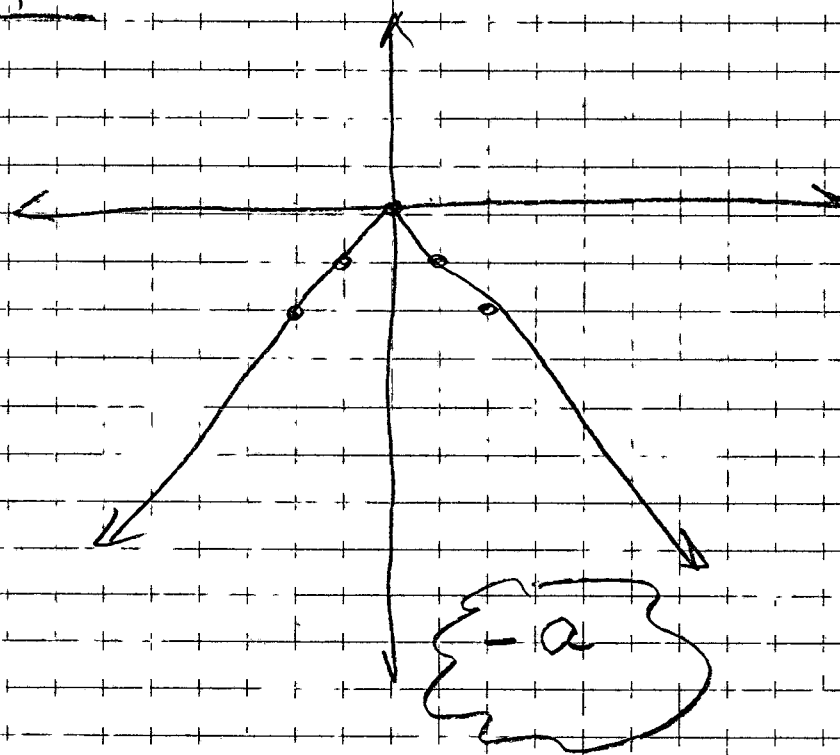


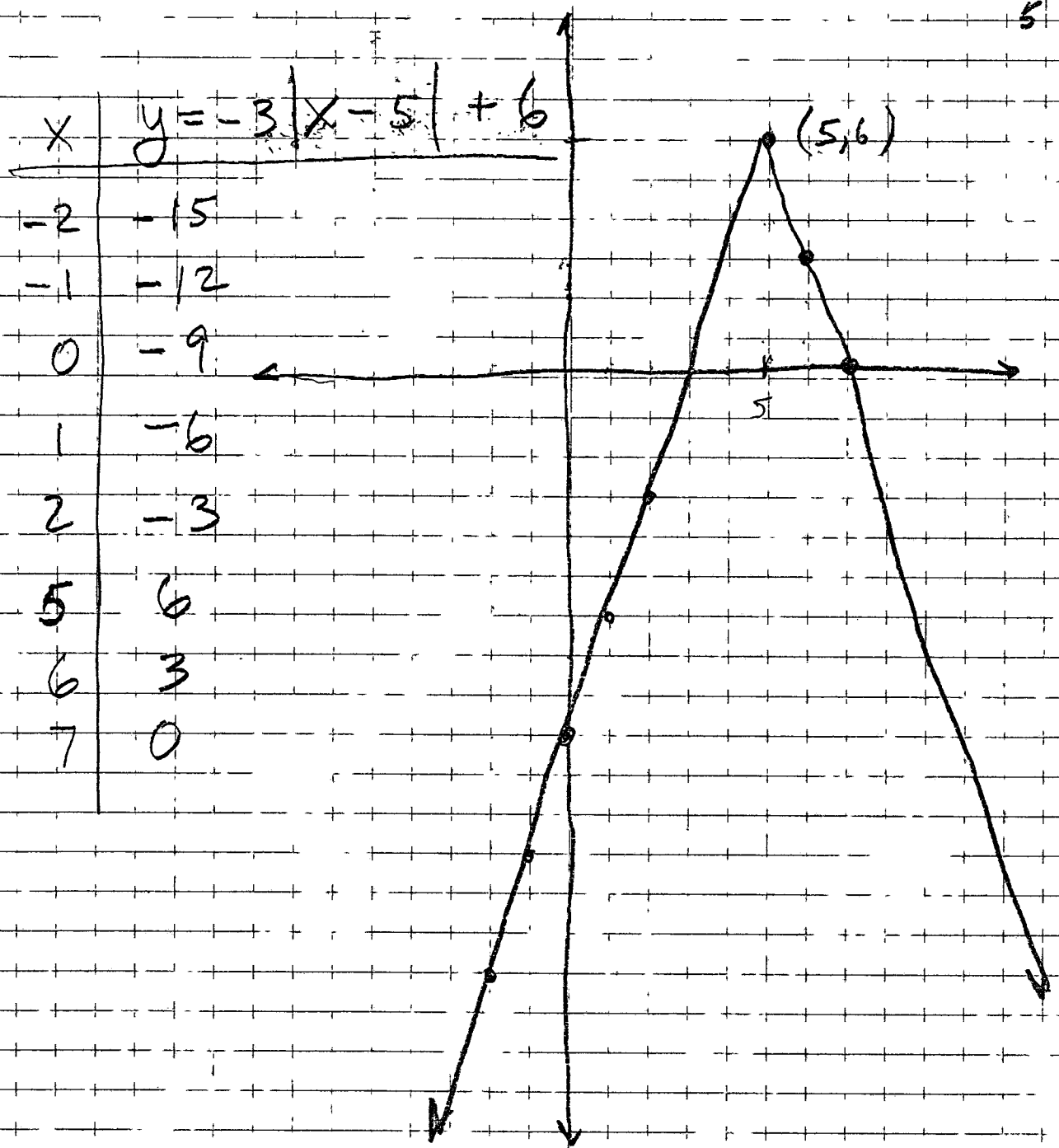
a > 1 SCALE

x	$y = \frac{1}{2} x $
-2	1
-1	$\frac{1}{2}$
0	0
1	$\frac{1}{2}$
2	1
-4	2
4	2



x	$y = - x $
-2	-2
-1	-1
0	0
1	-1
2	-2





Flipped ∇ because a is \ominus

Narrow because $a = 3$

horizontal shift is 5 units to right

vertical shift is 6 units up.