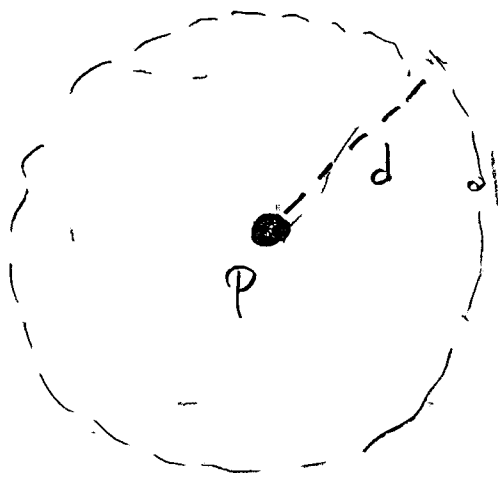


Algebra TUES. 5-7-13

CLASS NOTES

The locus of points equidistance in a plane from a single point, P.



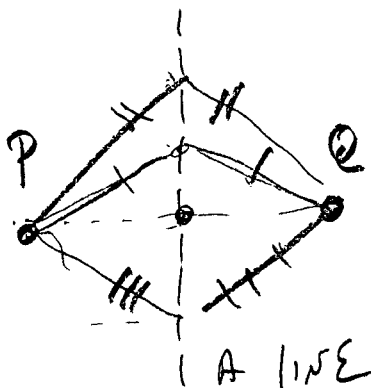
Geometry definition

Algebra definition

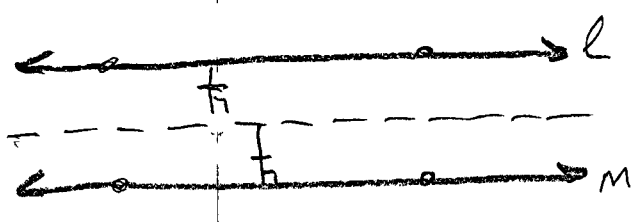
$$(x-h)^2 + (y-k)^2 = r^2$$

$C(h, k), r = \text{radius}$
center

The locus of points in a plane equidistant from 2 points, say P and Q



The locus of points, in a plane, equidistant from two parallel lines, say l, m .



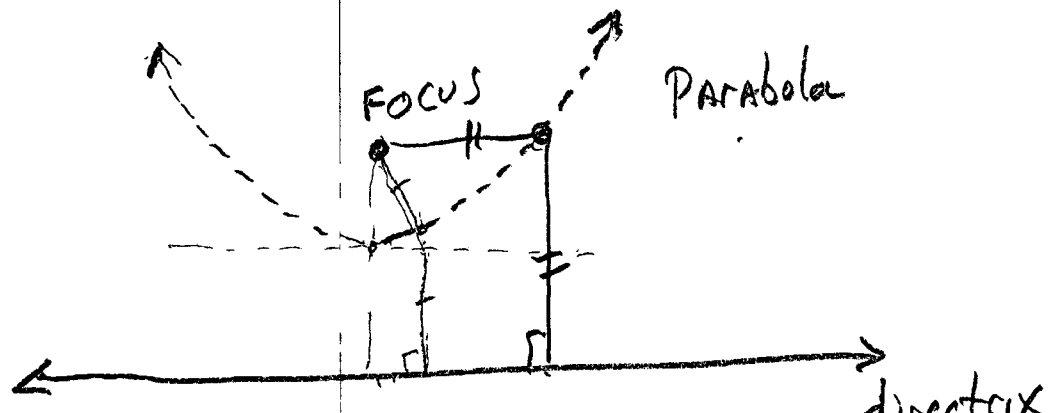
Algebra

$$y_l = mx + b$$

$$y_m = mx + b$$

The locus of points, in a plane, equidistant from a single point, F , and a line, say d .

Geometric



Algebra $\Rightarrow y = ax^2 + bx + c$

WAX PAPER PARABOLA EXERCISE