

MATH 113

Thurs. 1-3-12

Class Notes

Reciprocal
Trig Functions

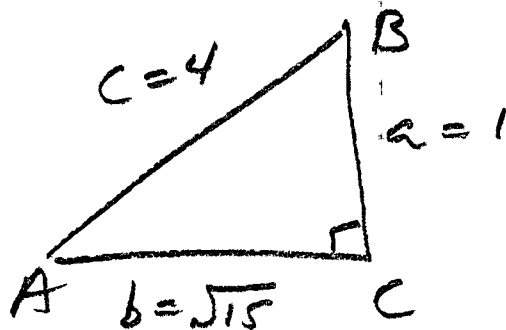
$$\underline{\sin} \theta = \frac{1}{\underline{\csc} \theta}$$

$$\underline{\cos} \theta = \frac{1}{\underline{\sec} \theta}$$

$$\underline{\tan} \theta = \frac{1}{\underline{\cot} \theta}$$

1-2
#24

$\cos B = \frac{1}{4}$ Find other 5
trig. ratios



↳ since $4^2 - 1^2 = b^2$

$$\sqrt{15} = b$$

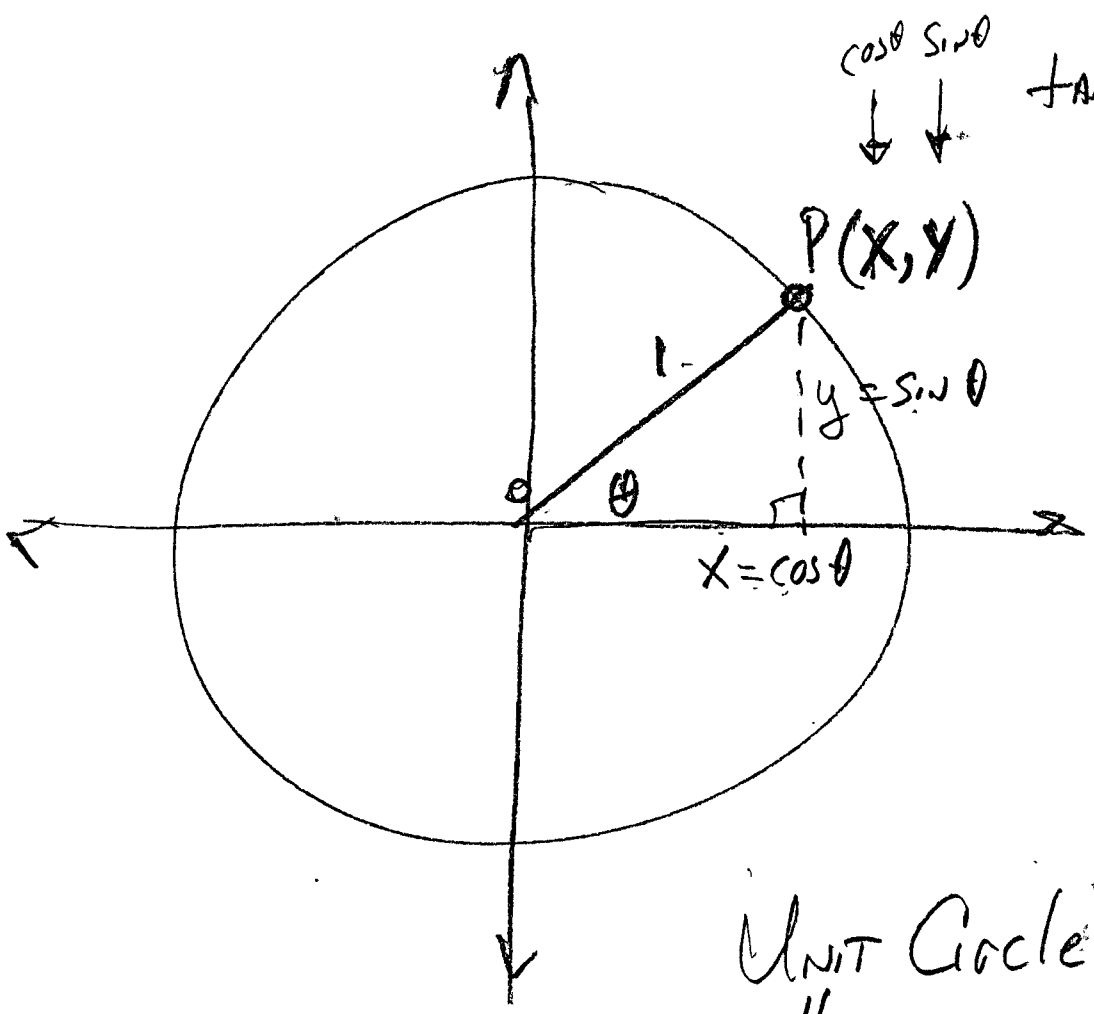
$$\sin B = \frac{\sqrt{15}}{4}$$

$$\tan B = \sqrt{15}$$

$$\sec B = 4$$

$$\csc B = \frac{4}{\sqrt{15}} \cdot \frac{\sqrt{15}}{\sqrt{15}} = \frac{4\sqrt{15}}{15}$$

$$\cot B = \frac{1}{\sqrt{15}} \cdot \frac{\sqrt{15}}{\sqrt{15}} = \frac{\sqrt{15}}{15}$$



Unit Circle
⇓
 $r = 1$