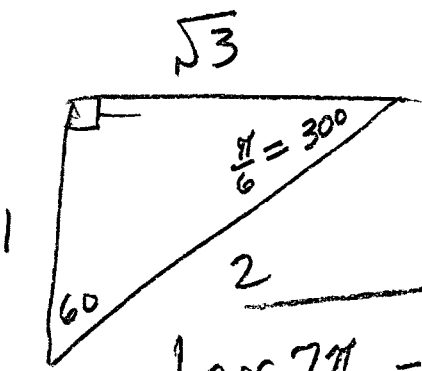
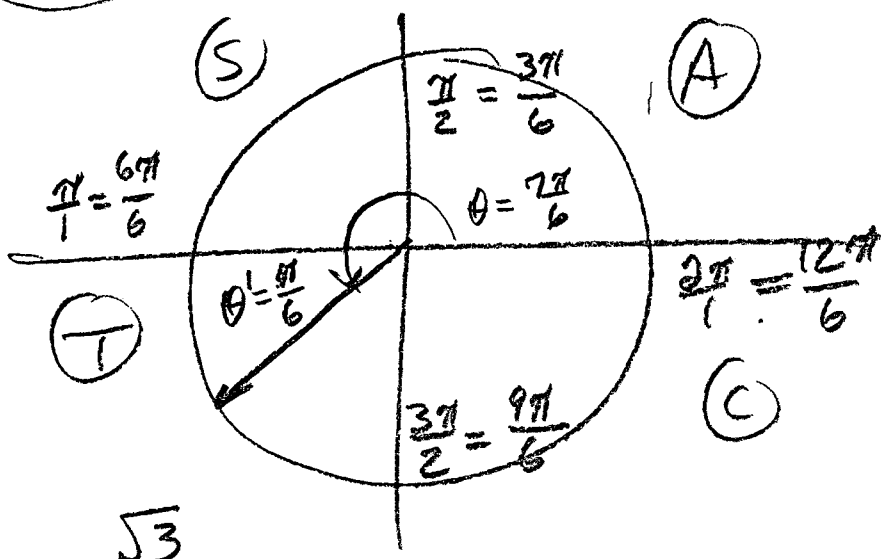


Mth 113 Weds. 1-23-13 (CLASS NOTES)

Ch. 2-6 Radian Measure -
VALUES OF the Trig. Functions

EX 2-6 A
pg 74

$\cos \frac{7\pi}{6}$ (EXACT)



$\cos \frac{7\pi}{6} = -\cos \frac{\pi}{6} = -\frac{\sqrt{3}}{2}$

RADIANS!

EX 2-6P
PS 7B

$$\textcircled{3} \quad \tan \frac{x}{2} = 1.5$$

$$\tan^{-1} \left(\frac{3}{2} \right) = \frac{x}{2}$$

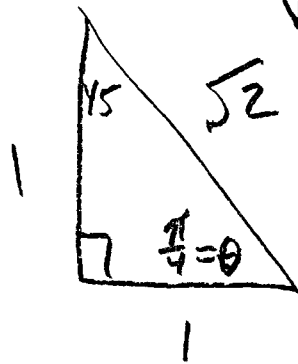
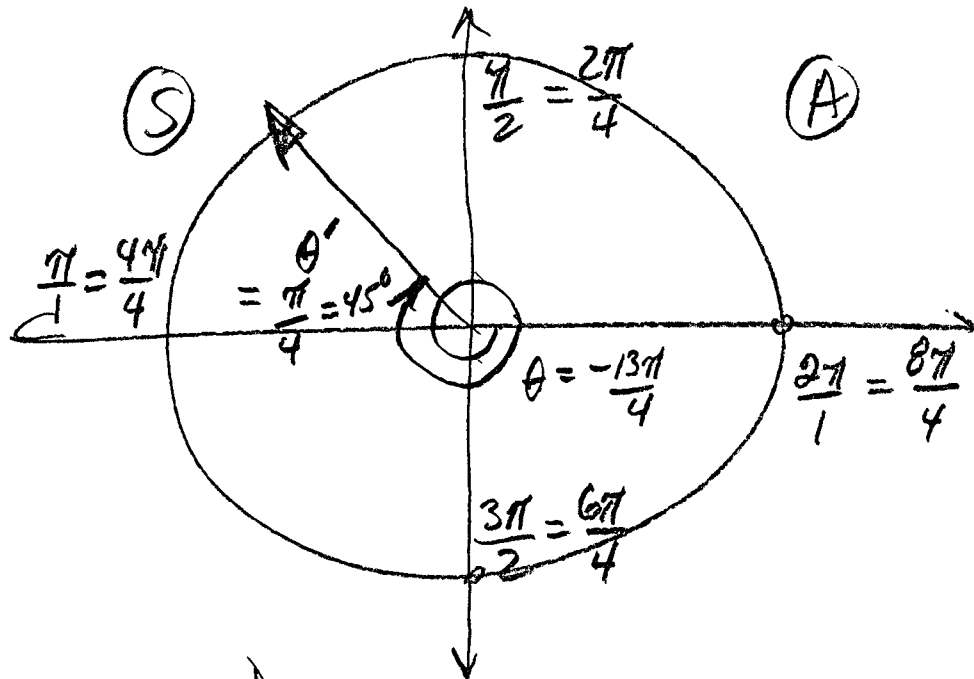
 \Downarrow

$$2(0.9828) = x$$

$$1.9656 = x$$

$$1.97 \text{ radians} = x$$

Ex 3 $\cot\left(-\frac{13\pi}{4}\right)$ EXACT



$$\cot \theta = \frac{a}{o} = 1$$

$$\cot\left(-\frac{13\pi}{4}\right) = -\cot \frac{\pi}{4}$$

$$= \boxed{-1}$$