

Mth 113

Monday

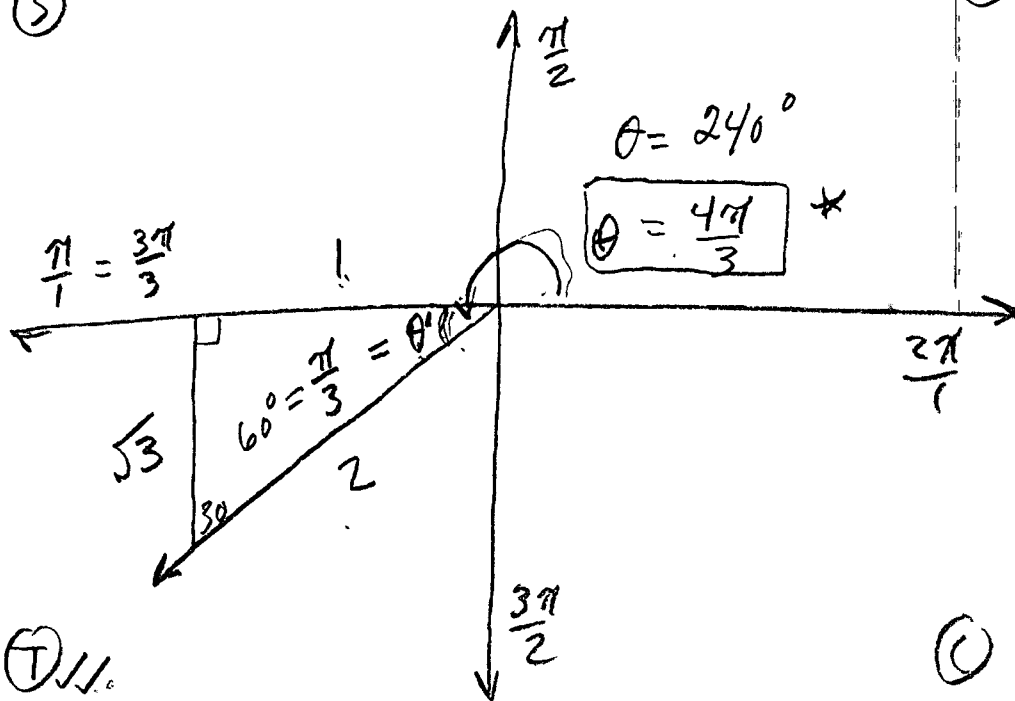
1-28-13

CLASS NOTES

pg 79 (28)  $\tan \theta = \sqrt{3}$ ,  $\sin \theta < 0$

(S)

(A) ✓



(T) //

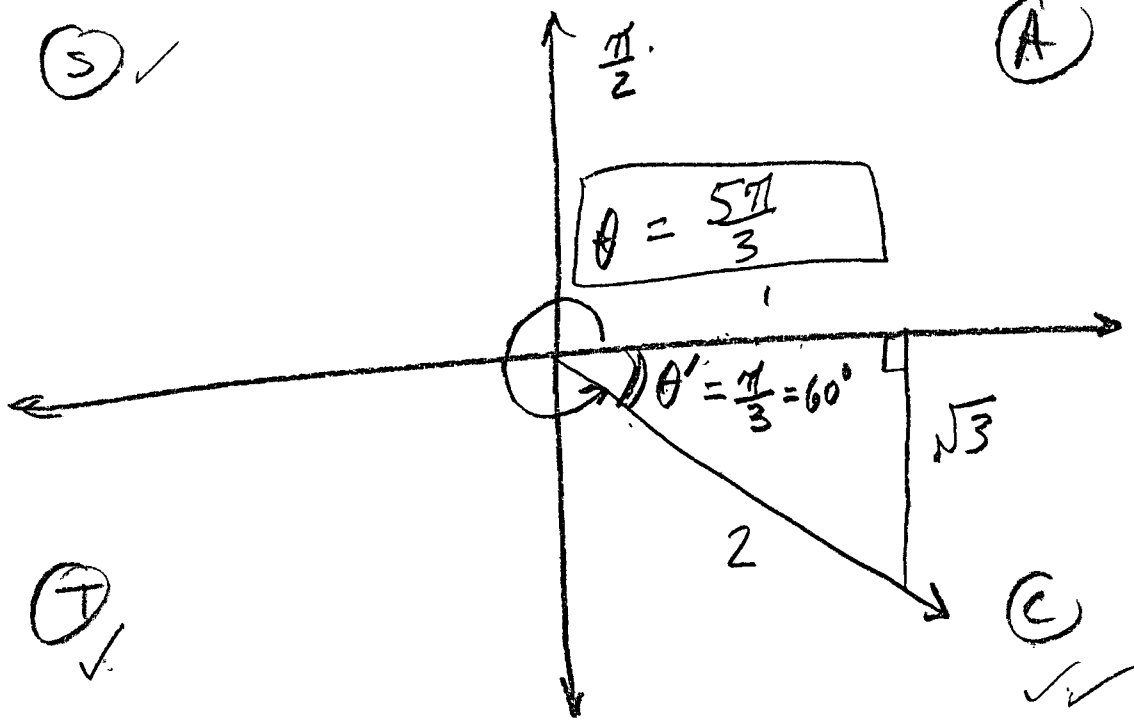
(C)

Practice for Exam 1

(29)  $\sin \theta = -\frac{\sqrt{3}}{2}$ ,  $\tan \theta < 0$

(S) ✓

(A)



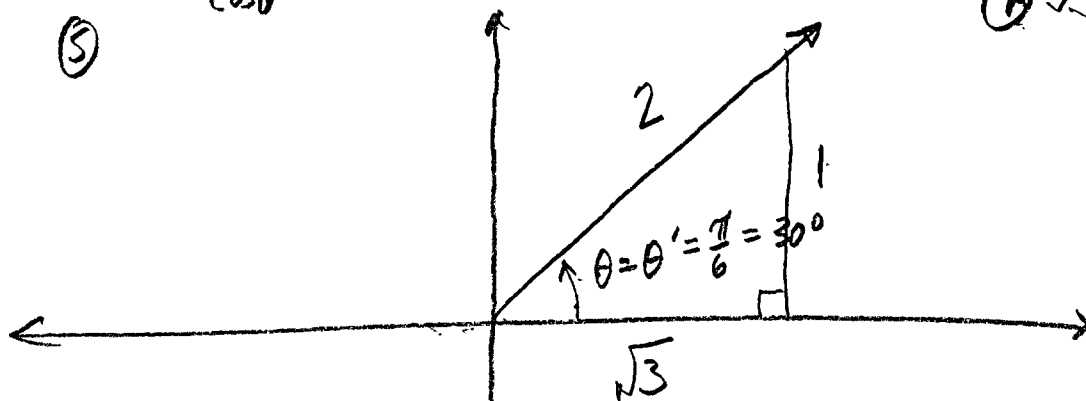
$$\textcircled{30} \quad \sec \theta = \frac{2}{\sqrt{3}} = \frac{2}{\frac{1}{2}}, \quad \sin \theta > 0$$

$$\Downarrow$$

$$\frac{1}{\cos \theta} =$$

⑤

Ⓐ ✓✓



Ⓣ

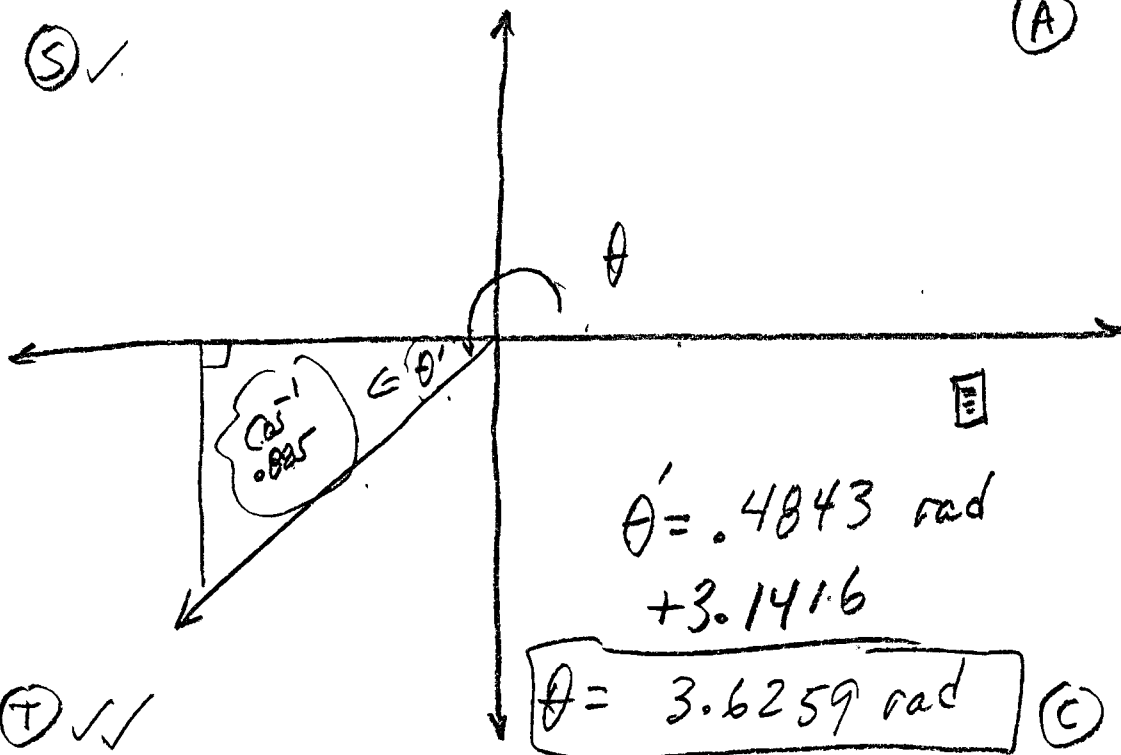
Ⓒ ✓  
sec +

$$\boxed{\theta = \frac{\pi}{6}}$$

$$\textcircled{37} \quad \cos \theta = -0.885, \quad \tan \theta > 0$$

$\textcircled{S} \checkmark$

$\textcircled{A}$



$\textcircled{T} \checkmark \checkmark$