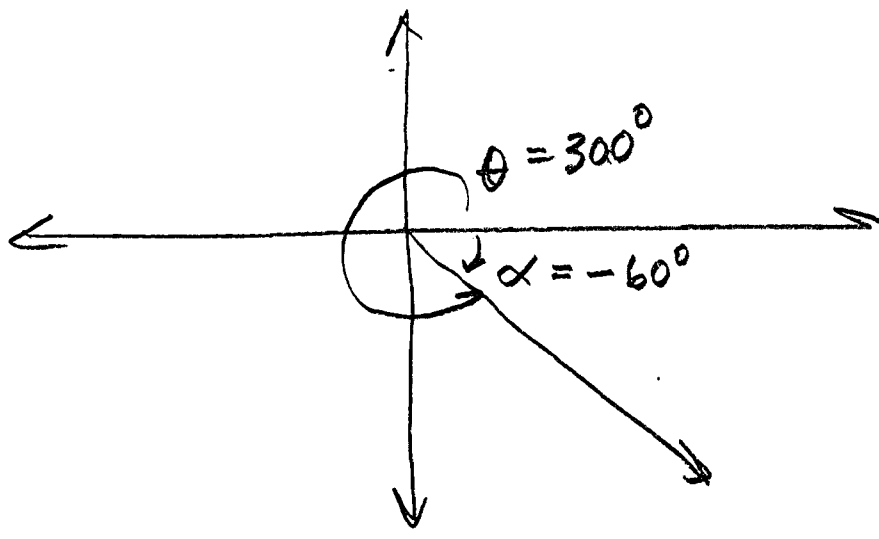
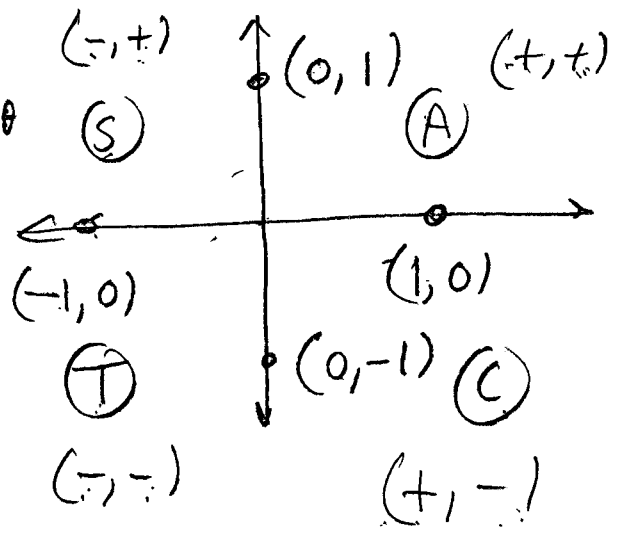
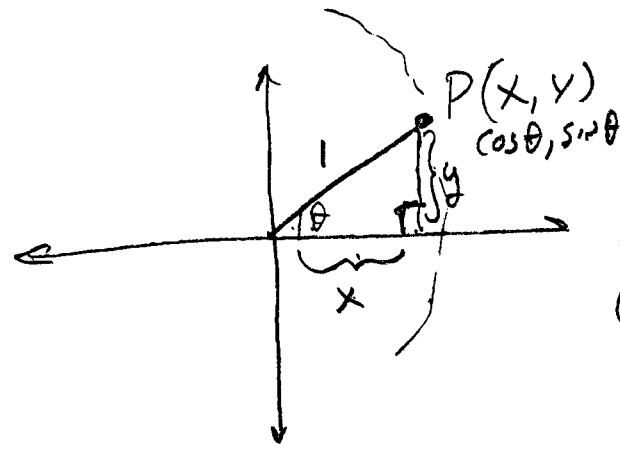
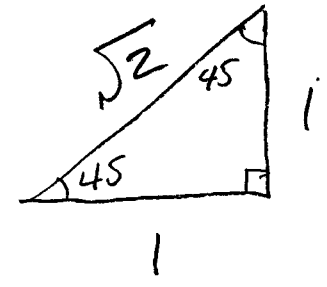
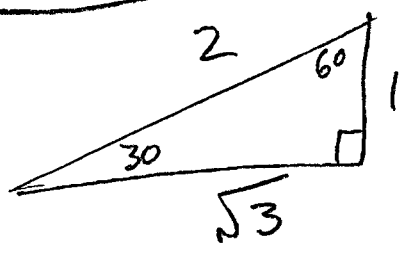
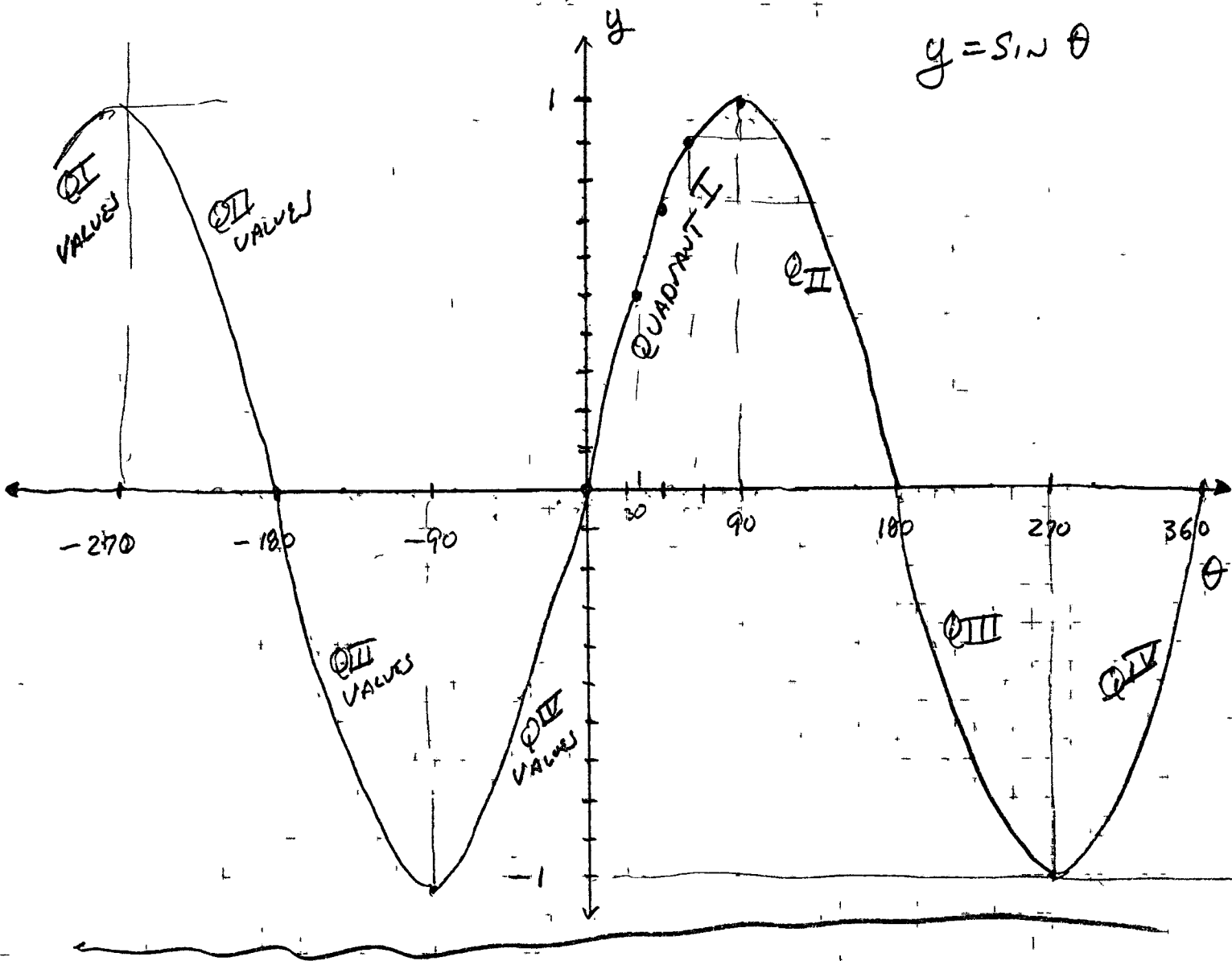


MATH 113 Mon. 4-8-13 (CLASS NOTES)



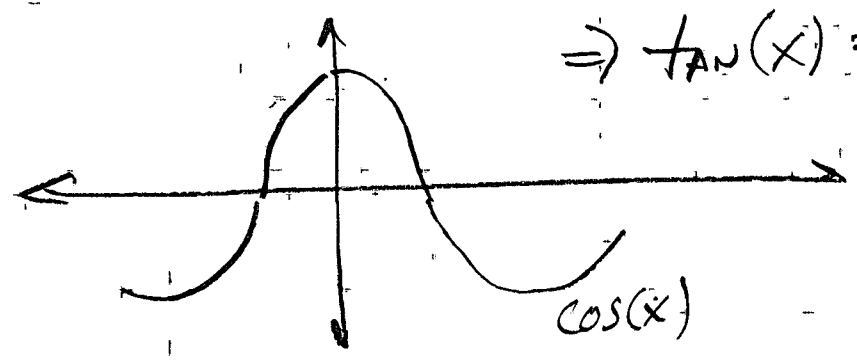
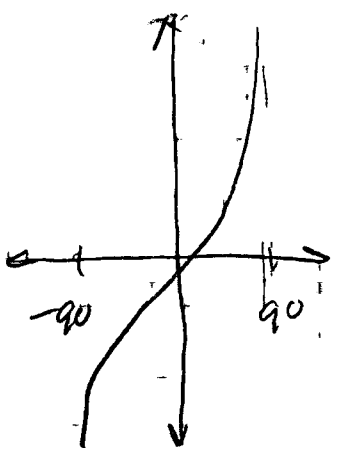
EXACT VALUES
"TOOLS"



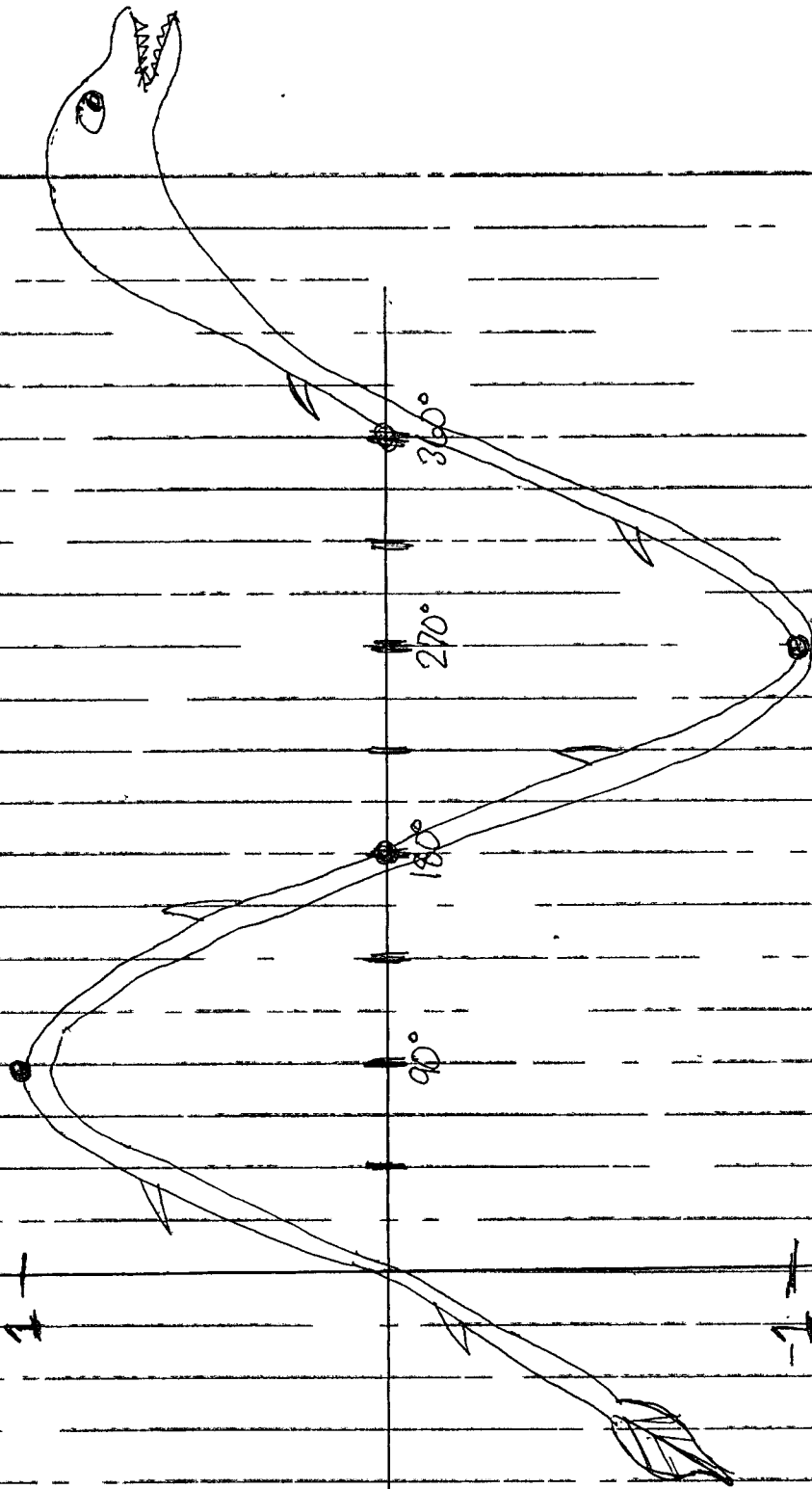
$f(x) = -f(x) \Rightarrow \sin(x) \Rightarrow$ ODD FUNCTION

$f(x) = f(-x) \Rightarrow \cos(x) \Rightarrow$ EVEN FUNCTION

$\Rightarrow \tan(x) \Rightarrow$ ODD FUNCTION



Sineosaurus



By H. Goble

CHLOROPHYLL

(1)

1

1

1

1