

BE-1A MONDAY 1-31-11

① GRAPH $y = -2$, is this line a function? WHAT is its slope?

② GRAPH $x = 3$, is this line a function? What is its slope?

③ GRAPH $y = \frac{2}{3}x + 1$, is this line a function? WHAT is its slope? WHAT is its domain? WHAT is its range?

• Homework # 3 / Quiz 3 return/review.

1.

If you know the slope, m
and the y -intercept, b of a line,
you can immediately write the
EOL, EQATION of LINE in $y = mx + b$
form.

ex) SLOPE = 2

y -intercept = 5

WRITE THE EOL.

$$y = mx + b$$

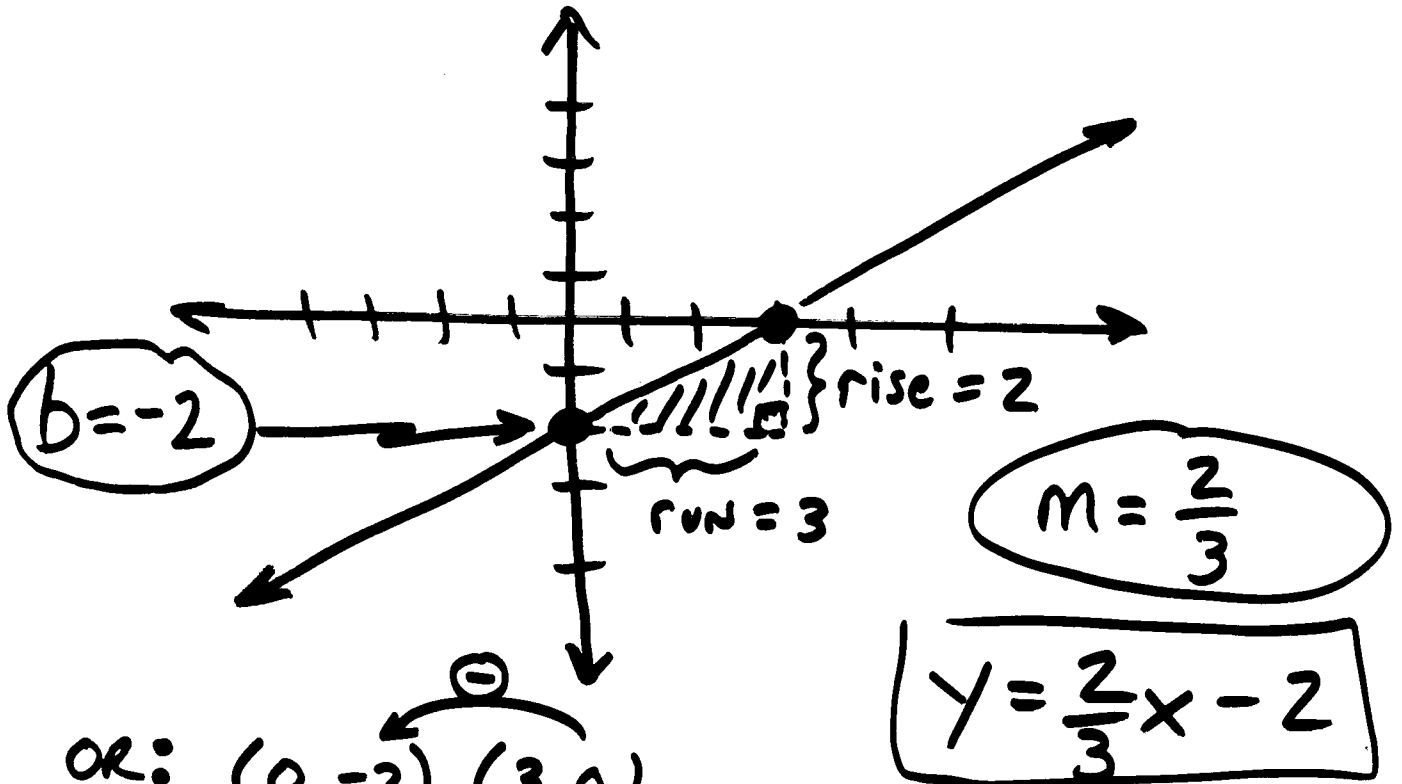
$$\boxed{y = 2x + 5}$$

ex) SLOPE = $-\frac{1}{3}$
EOL ?

y -intercept is -2

$$\boxed{y = -\frac{1}{3}x - 2}$$

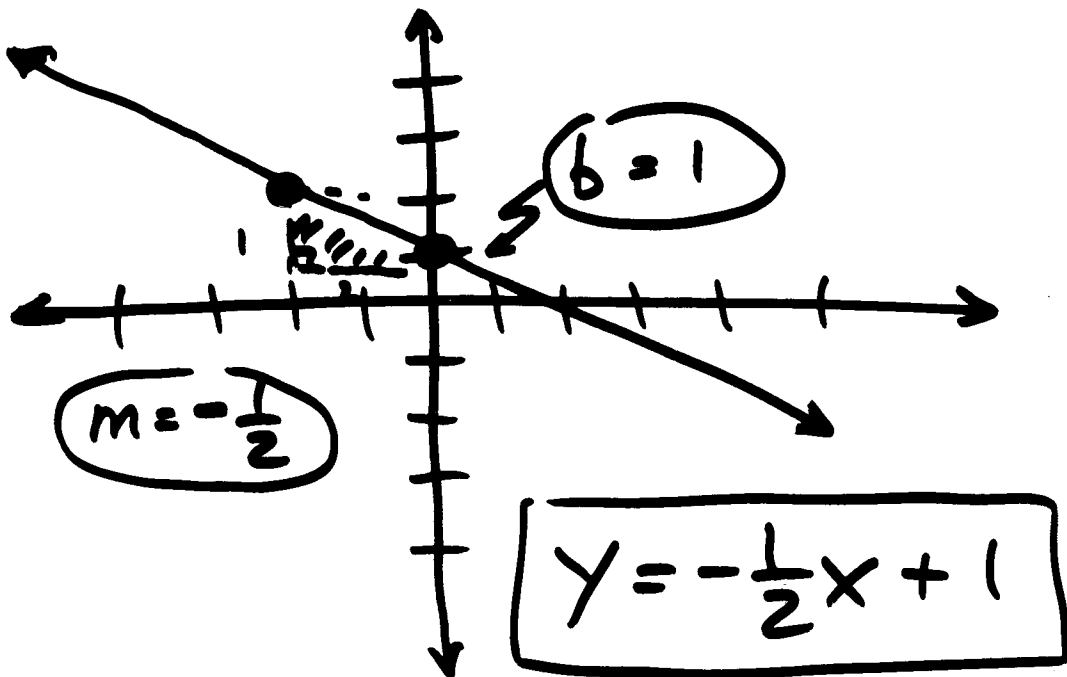
Ex) Find the EOL of this line: 2.
2a



OR: $(0, -2), (3, 0)$

$$m = \frac{0 - (-2)}{3 - 0} \therefore m = \frac{2}{3}$$

Ex) Find EOL:



Classwork / group practice:

Pg. 275 # 1 to 7

Homework:

Pg. 275 # 14 to 22