

Algebra 2

Monday 1-14-13

CLASS NOTES

Ch. 11-1 GRAPHS OF THE SINE AND COSINE

- Graph the "base" or parent sine function $y = f(x) = \sin(x)$ for $0 \leq x \leq 90$ (QUADRANT I)

pg 757

$$y = a \sin b(x - h) + k$$

↑ AMPLITUDE

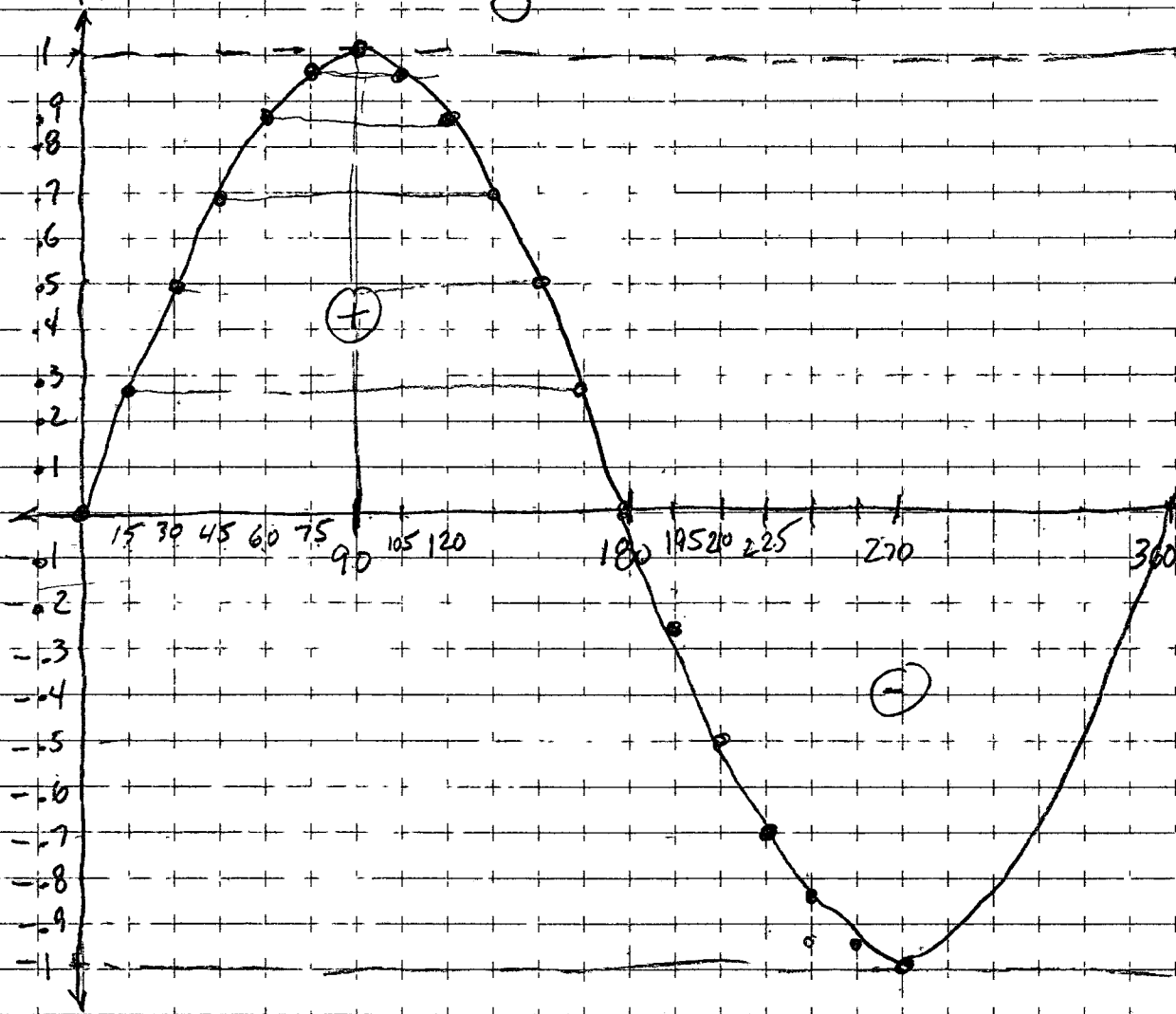
↑ horizontal shift "PHASE" shift

↑ VERTICAL shift

$\frac{360}{|b|}$ or $\frac{2\pi}{|b|}$

PERIOD

PARENT Function $y = f(x) = \sin(x)$



Use Wolfram Alpha to
explore transformation of
 $y = \sin x$