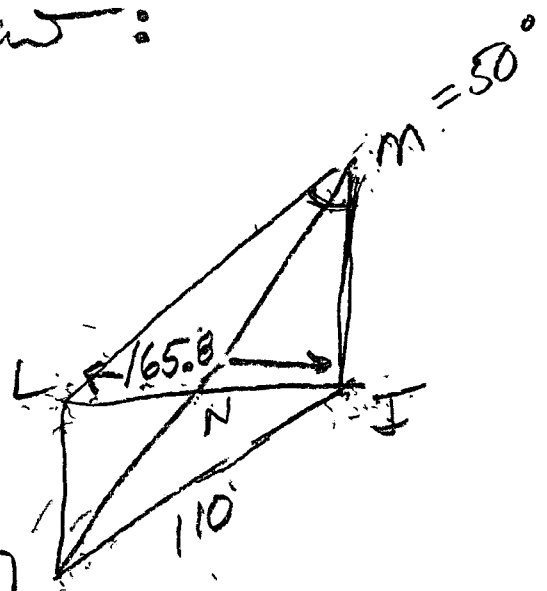


Geometry Thurs. 2-21-13 CLASS NOTES

Homework Review:

Pg. 407, 15-21 ODD

- (15) $\square JKLM$
 $JL = 165.8$
 $JK = 110$
 $m\angle JML = 50^\circ$

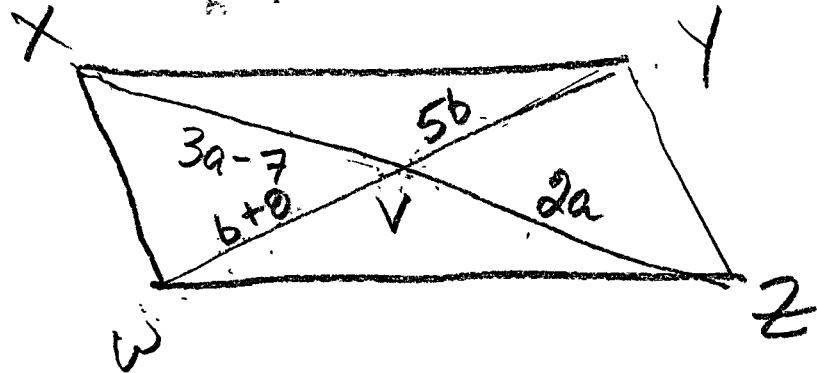


$$JN = ? \frac{165.8}{2} = \boxed{82.9} \quad K$$

(17) $LN = ? \boxed{82.9}$

(19) $m\angle KLM = ? = \boxed{130^\circ}$

(407)
(21)



$$WV = ? \quad \begin{array}{r} b + 8 = 5b \\ -b \quad \quad -b \end{array}$$

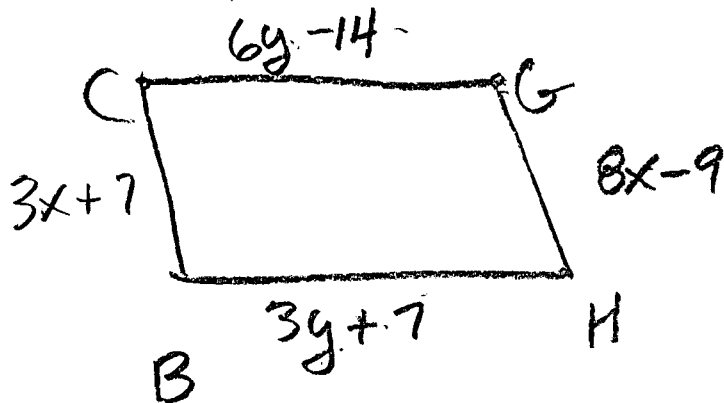
$$8 = 4b \quad \therefore b = 2$$

$$\boxed{WV = 10}$$

414

⑨

Show \overline{BCGH} is \parallel for $x = 3.2$
 $y = 7$



$$\overline{CG} \Rightarrow 6(7) - 14 = 28 \checkmark$$

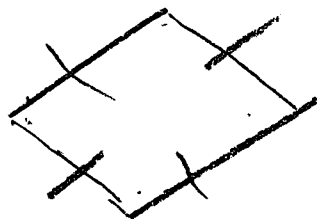
$$\underline{\overline{BH} \Rightarrow 3(7) + 7 = 28 \checkmark}$$

$$\overline{CB} \Rightarrow 3(3.2) + 7 = 16.6 \checkmark$$

$$\overline{GH} \Rightarrow 8(3.2) - 9 = 16.6 \checkmark$$

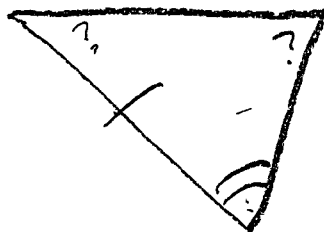
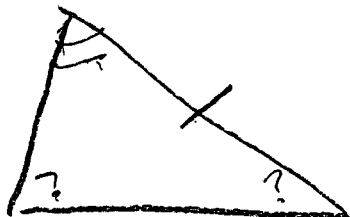
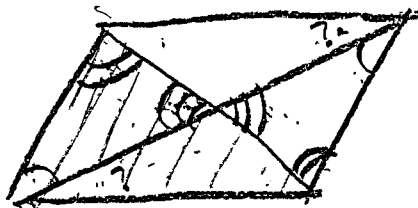
Since opp sides $\stackrel{\sim}{=}$, \parallel

414
⑪



yes \square , opp. sides \cong

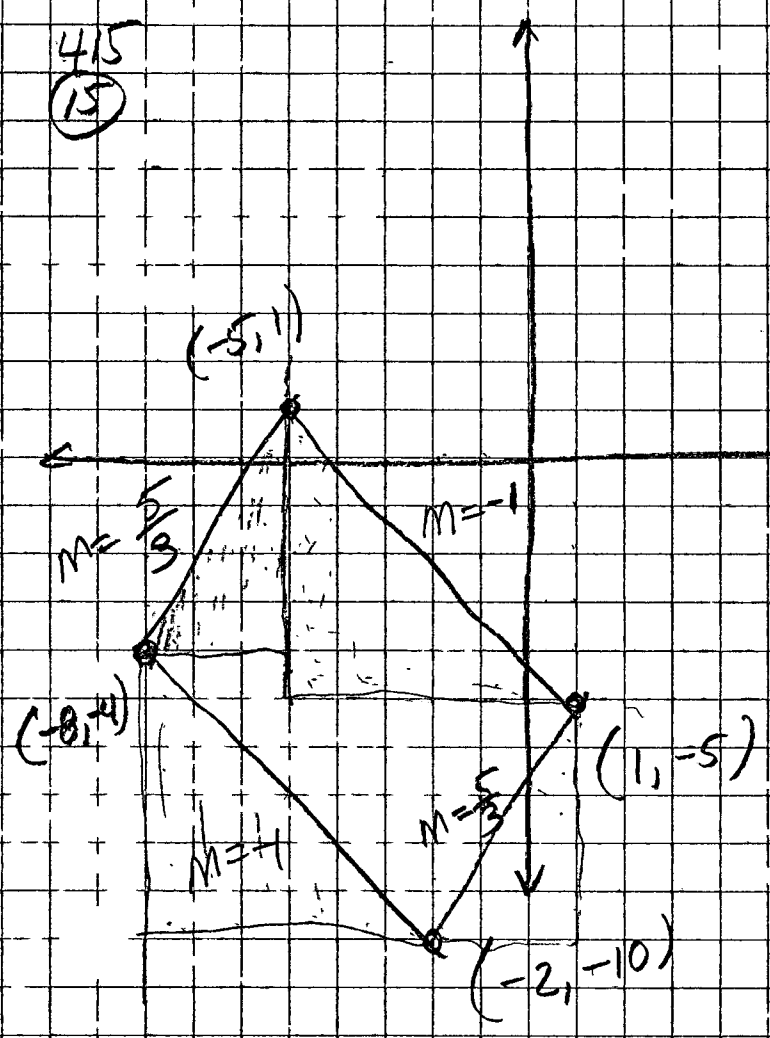
⑬

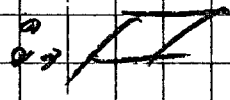


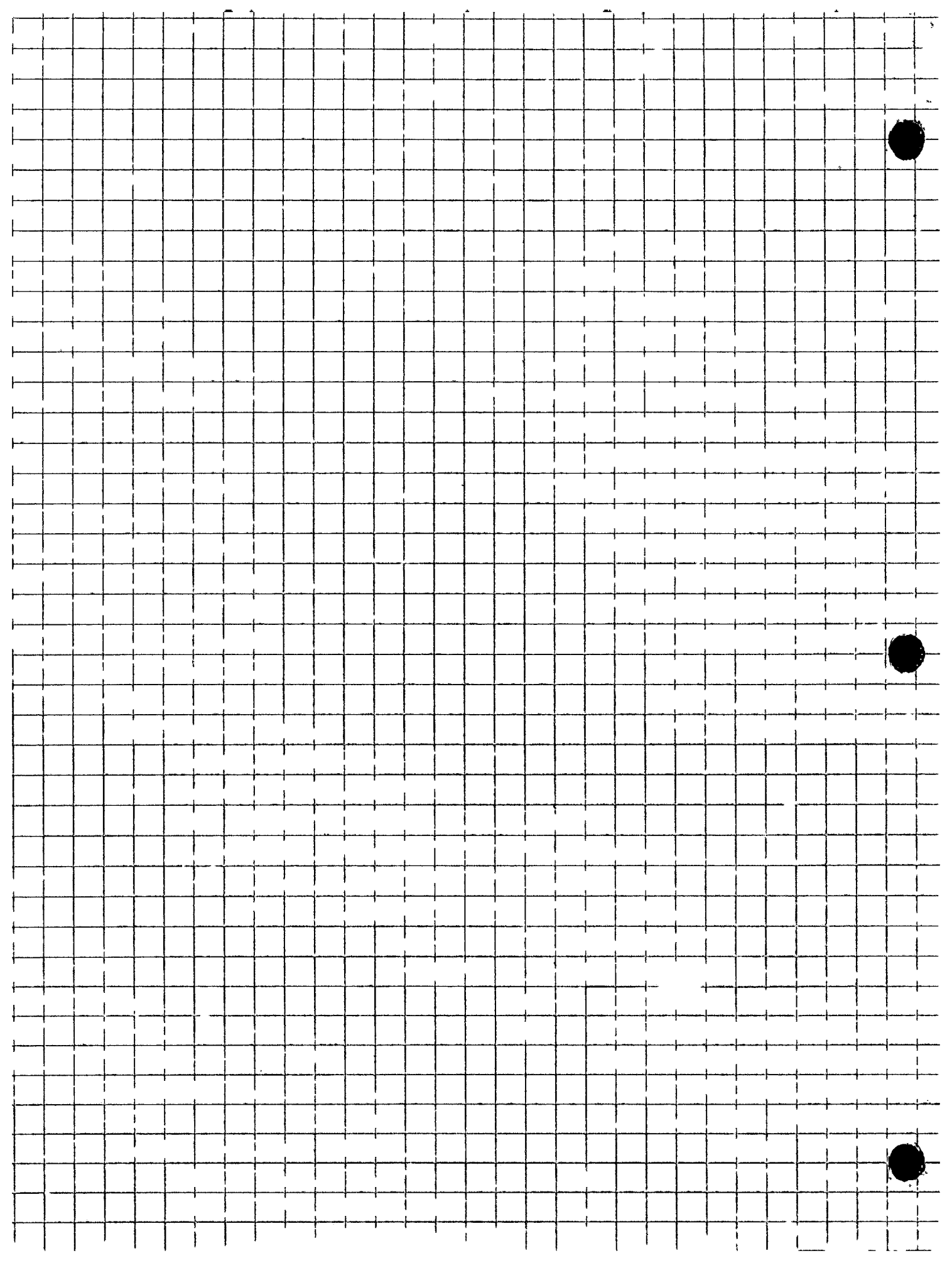
NO!

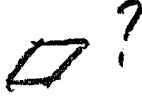
⑭

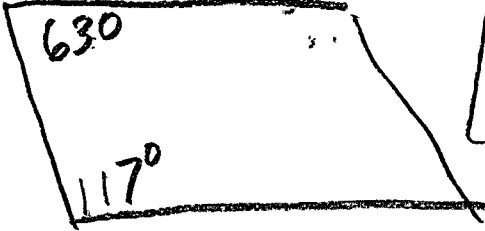

415
15

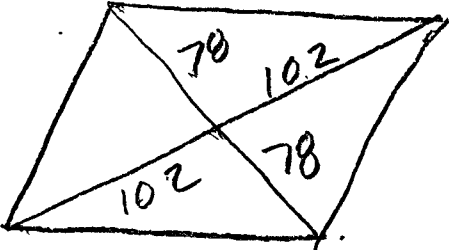



SLOPES OF
OPP. SIDE ARE
SAME, OPP
SIDES ARE //,


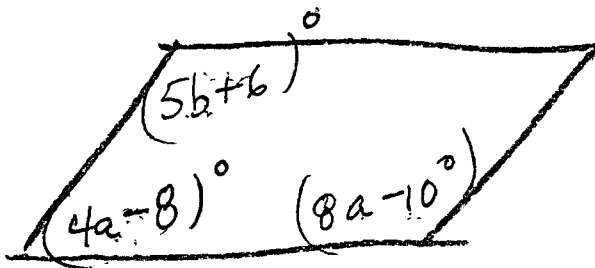


(4/5)  ?

(17)  NOT 

(19)  DIAGONALS ARE BISECTED

(21) a, b to make 



~~$$(4a-8) + (8a-10) = 180$$~~

~~$$5b+6 = 8\left(\frac{33}{2}\right) - 10 \quad 12a - 18 = 180$$~~

~~$$\frac{12a}{12} = \frac{198}{12}$$~~

~~$$5b+6 = 132 - 10$$~~

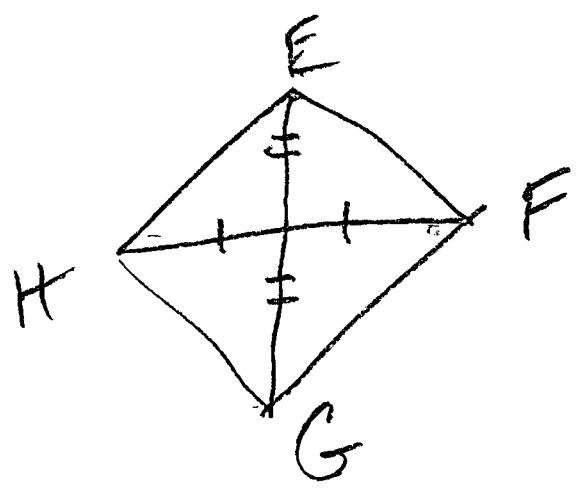
~~$$5b+6 = 122$$~~

~~$$\frac{5b}{5} = \frac{116}{5}$$~~

~~$b = \frac{116}{5}$~~

$$a = \frac{99}{6} = \frac{33}{2}$$

434
⑦



\overline{EG} and \overline{FH} bisect
 $\overline{EG} \perp \overline{FH}$
RHOMBUS?