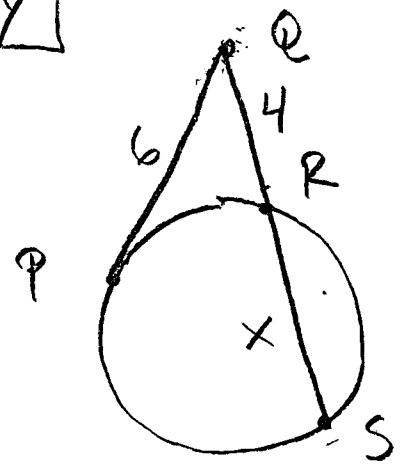


Geometry

MONDAY 2-25-13

CLASS NOTES

86



FIND RS

$$(4+x) \cdot 4 = 6^2$$

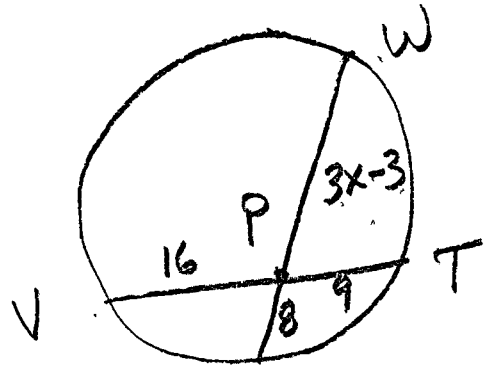
$$16 + 4x = 36$$

$$\begin{array}{r} -16 \\ 4x = 20 \end{array}$$

$$4x = 20$$

$$\boxed{x = 5} = RS$$

88



FIND PW

$$(3x-3) \cdot 9 = 16 \cdot 9$$

$$\begin{array}{r} 24x - 24 = 144 \\ +24 \quad +24 \end{array}$$

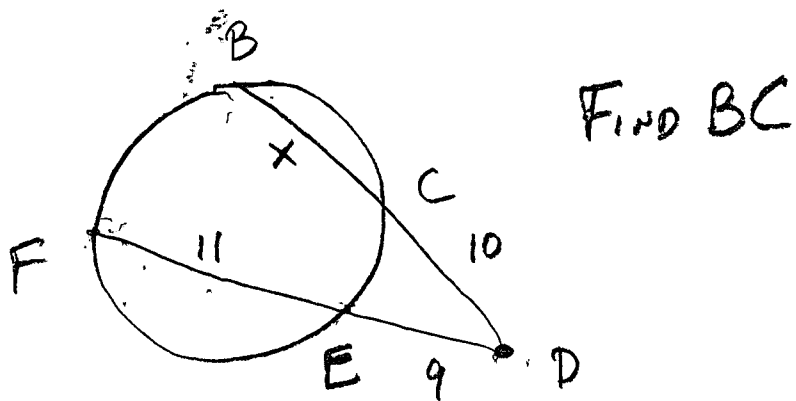
$$24x = 168$$

$$\boxed{x = 7}$$

$$\begin{aligned} \therefore PW &= 3x - 3 \\ &= 3(7) - 3 \end{aligned}$$

$$\boxed{PW = 18}$$

(90)



$$(11+9)9 = (10+x)10$$

$$180 = 100 + 10x$$

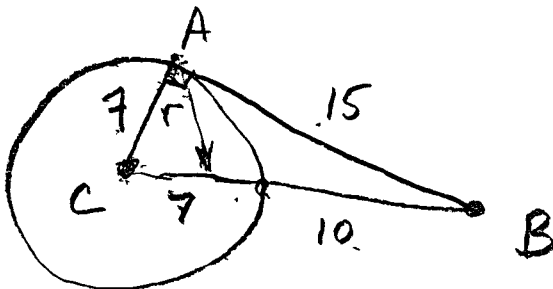
$$-100 \quad -100$$

$$80 = 10x$$

$$8 = x \quad \therefore \boxed{BC = 8}$$

Is line AB tangent to circle?

(78)



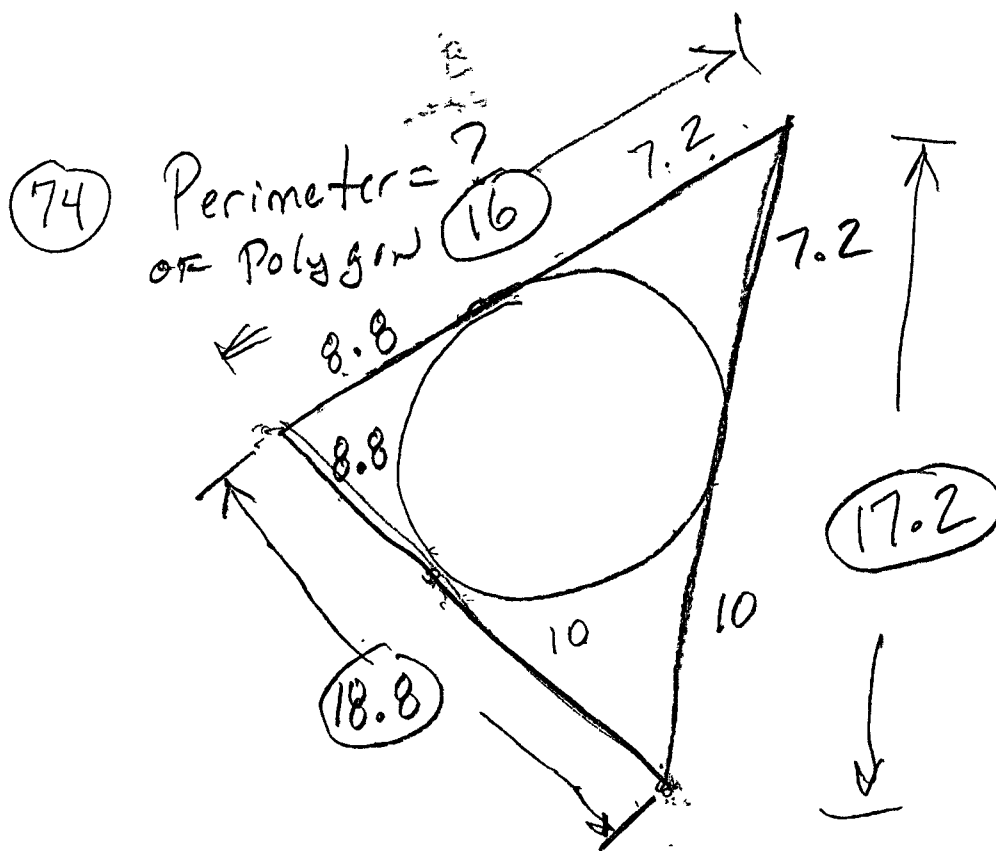
to be tangent,  $m\angle BAC = 90$

$$c^2 = a^2 + b^2$$

$$17^2 = 15^2 + 7^2$$

$$289 = 225 + 49$$

$$289 \neq 274 \quad \therefore \boxed{\text{NOT TANGENT}}$$



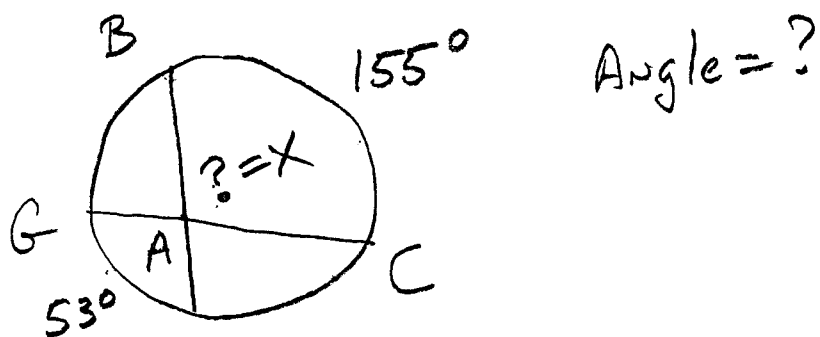
$$P = 16.0$$

$$18.8$$

$$17.2$$

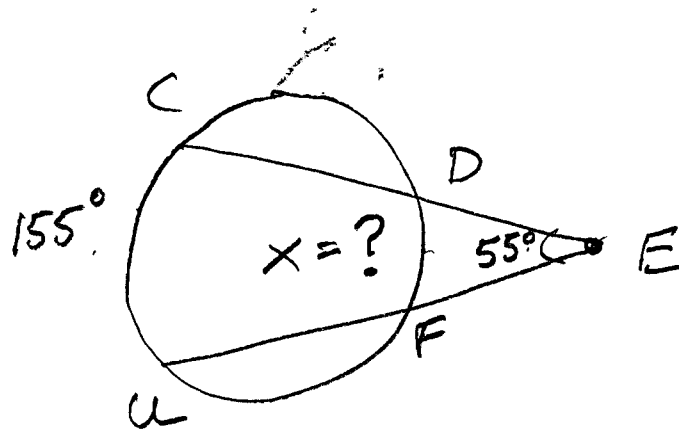
$$P = \boxed{52.0} \text{ UNITS}$$

(62)



$$X = \frac{155 + 53}{2} = \frac{208}{2} = 104^\circ$$

(64)



$$\frac{155 - X}{2} = 55 \cdot 2$$

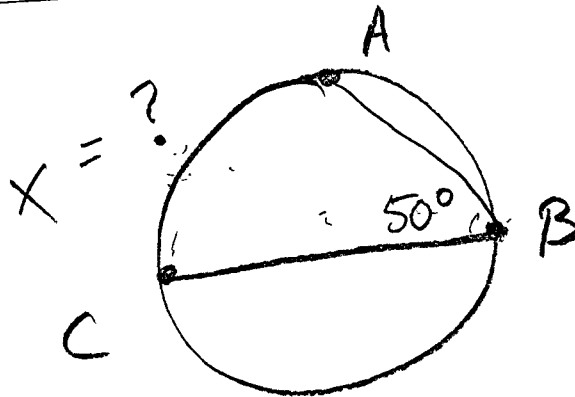
$$155 - X = 110$$

$$-155 \quad -155$$

$$-X = -45$$

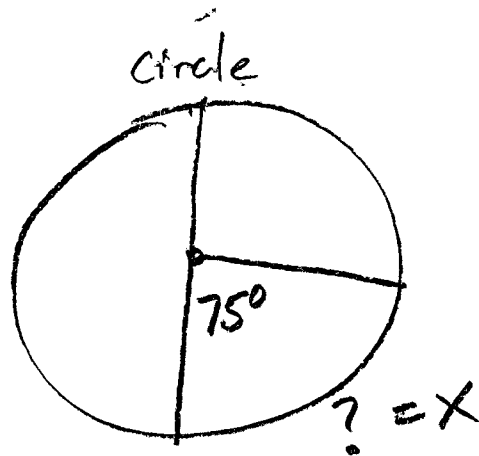
$$X = 45^\circ$$

(66)



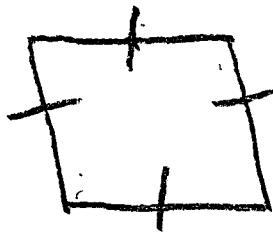
$$X = 100^\circ$$

(58)



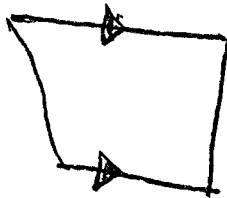
$$X = 75^\circ$$

(39)



- Quadrilateral
- Parallelogram
- Rhombus

(40)



- Quadrilateral
- trapezoid

$$C_D = 2\pi r$$


---


$$A_D = \pi r^2$$

$$\pi \approx 3.1416$$

$$\rightarrow (13) \quad r = 10.9 \text{ yd}, \quad C = ?, \quad A = ?$$

$$C = 2(3.1416)(10.9) = 68.5 \text{ yd}$$

$$A = (3.1416)(10.9)^2 = 373.3 \text{ yd}^2$$